

MONSTER JAM WORLD FINALS[®] BY THE NUMBERS

THE IMPRESSIVE DIGITS BEHIND THE BIGGEST MONSTER JAM[®] EVENT OF THE YEAR

These BKT tires are specifically designed and built to meet the massive demands of Monster Jam[®] trucks

66"
TALL
43"
WIDE

645
POUNDS
Combined tire and wheel weight

Increased strength to minimize truck bounce, inflated to the optimal tire pressure of **23PSI**



The tires transfer energy to the suspension, which includes a set of nitrogen-charged shocks with 30" of travel

1,500
HORSEPOWER

Produced by the methanol-fueled engines in Monster Jam trucks (for comparison, the average pickup truck on the road produces 200-400HP)



Monster Jam trucks can reach speeds of up to

100MPH

12,000
POUNDS The weight of a Monster Jam truck

12.5 FEET WIDE
10.5 FEET TALL



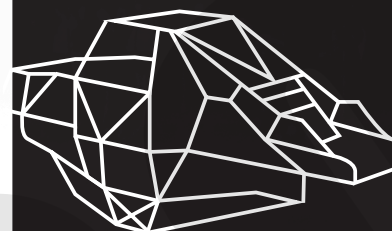
2024 MONSTER JAM WORLD FINALS TRACK

8,000
yards of dirt

600 TRUCKLOADS

36 HOURS TO BUILD

30 PIECES OF EQUIPMENT



80 HOURS

Amount of time for two technicians to assemble a Monster Jam truck frame, built from more than 800 feet of tubing

15 MINUTES

In an emergency situation, how quickly technicians can change out a Monster Jam truck transmission

2024 MONSTER JAM WORLD FINALS TRUCKS AND DRIVERS

50

TRUCKS ON DISPLAY

35

DRIVERS COMPETING

OVER 10 UNIQUE PAINT OUTS



3

First-Time Defending Champions, including Tristan England

FUN FACT

Trucks competing in the High Jump competition run a lower gear to maximize power and height